



**ELIM  
REAL®**



*Patent FR 0852003*

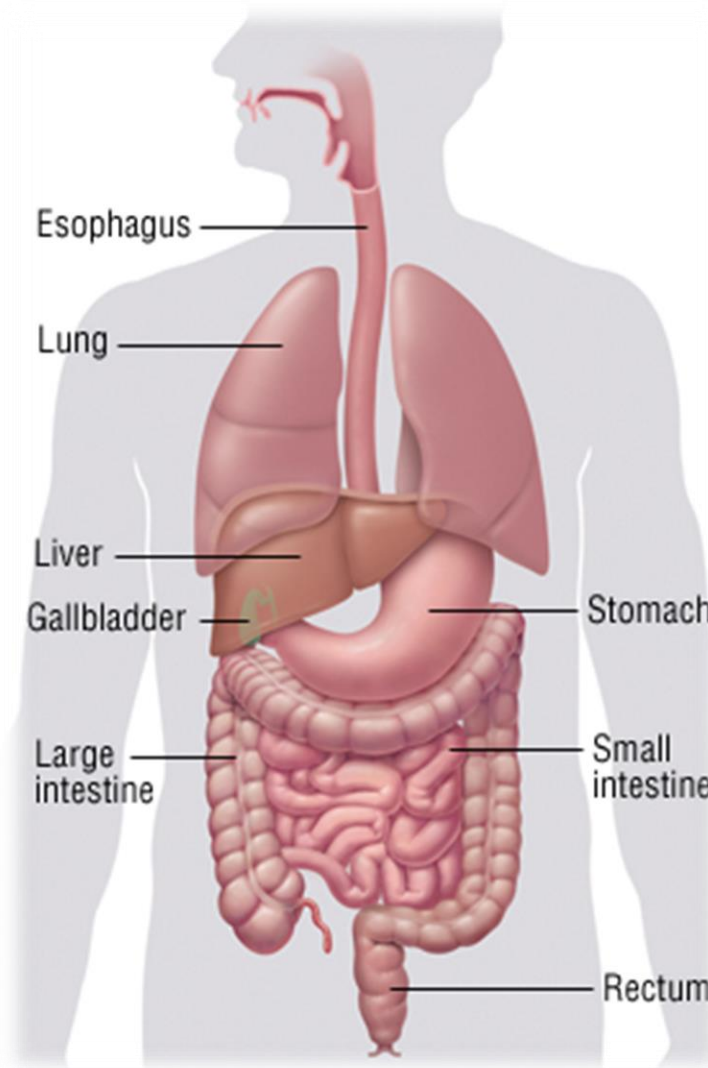


**Water elimination**

**...by increasing the number  
of daily urinations**

**INN'Réal**

# Detoxification organs



Lung

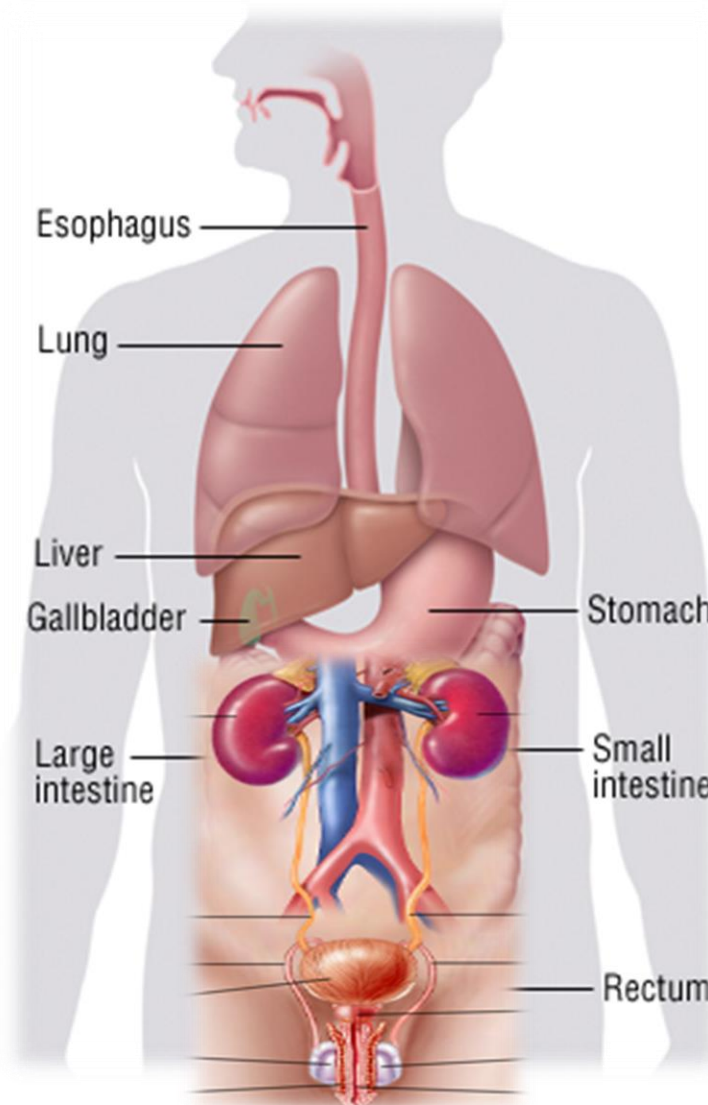
Liver

Gall Bladder

Stomach

Intestine

# Detoxification organs



Lung

Liver

Gall Bladder

Stomach

Intestine

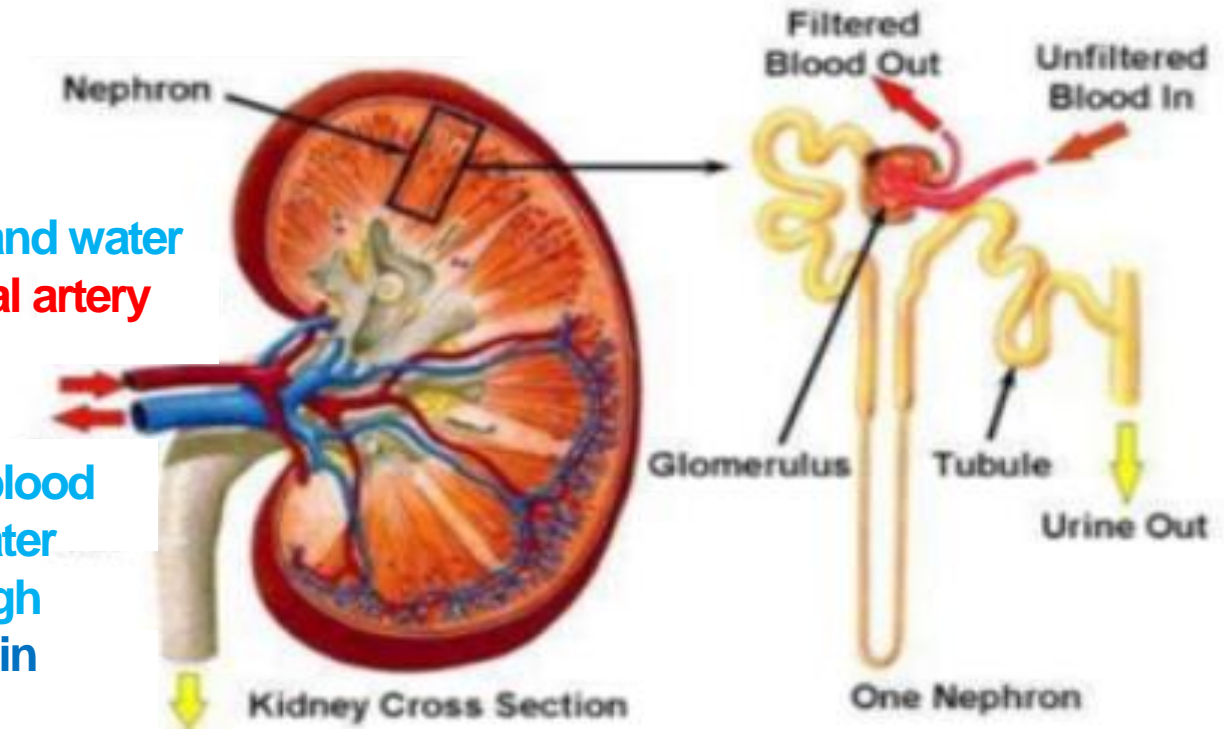
**Kidneys ???**

# Kidney Detoxification

1) Blood, waste and water enter through **renal artery**

2) Filtered blood & excess water leave through the renal vein

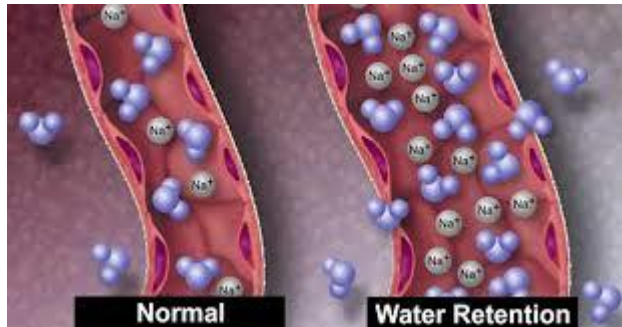
3) Excess water and toxic waste in the form of **urine** leave via the Ureter



# Water retention / Swelling ?



Water retention happens when excess fluid builds up inside the body, usually in the hip, calves, thighs, arms and face.



Poor venous and lymphatic circulation lead to excess fluid trapped in the body and failure to excrete the body fluid

First remedy : Releasing  
EXCESS Water and Sodium intake : **KIDNEY !**



# Even worse due to Sodium in Food

Individuals who wish to reduce their blood pressure

Normal individuals



**Sodium**  
(Salt/2,5)

Maximum  
**1,000mg**

Maximum  
**1,500mg**

Maximum  
**2,400mg**

**3,400mg**

Individuals with hypertension or high risk of getting hypertension

Most people



Pizza  
**1,500mg**



Chips  
**2,150mg**



Fishball Noodle  
**2,913mg**



Burger & fries  
**3,100mg**

About **75%** of sodium we consumed came from:  
• Processed food  
• Food from restaurants

# Kidney additional roles

Water balance



Blood pressure regulation  
(Renine)



Electrolyte regulation  
(Na<sup>+</sup>, Ca<sup>2+</sup>, K<sup>+</sup>)



Metabolic waste excretion  
(Drugs,..)



Bone formation  
(D3 – Calcitriol)



Red cells production regulation (EPO)





# Your kidney partner

Patented diuretic application  
registered in France (FR 08 52003)

10 RÉPUBLIQUE FRANÇAISE  
INSTITUT NATIONAL  
DE LA PROPRIÉTÉ INDUSTRIELLE  
PARIS

11 N° de publication : **2 929 120**  
(à utiliser que pour les  
commandes de reproduction)

12 N° d'enregistrement national : **08 52003**

51 Int. Cl. : A 61 K 31/00 (2006 01), A 61 K 41/00, B1/52, 36/23, 36/73, 36/26, A 61 P 1/00, A 61 D 7/00, A 23 L 1/00

12 BREVET D'INVENTION **B1**

54 COMPOSITION AYANT UNE ACTIVITE D'AMINCISSEMENT CORPOREL ET/OU DIURETIQUE CHEZ LES MAMMIFERES.

22 Date de dépôt : 28.03.08	50 Références à d'autres documents nationaux apparentés :
38 Procede :	71 Demandeur(s) : NUTRAVERIS Société à responsabilité limitée et GALICE Société par actions simplifiée - FR.
13 Date de mise à la disposition du public de la demande : 02.10.09 Bulletin 09/10	72 Inventeur(s) : BOURGES CEDRIC et LEBORDAIS MAGGY.
45 Date de la mise à disposition du public du brevet d'invention : 26.01.10 Bulletin 10/21	73 Titulaire(s) : NUTRAVERIS Société à responsabilité limitée, GALICE Société par actions simplifiée.
57 Liste des documents cités dans le rapport de recherche :  Se reporter à la fin du présent fascicule	74 Mandataire(s) : BREMA LOYER.



- Natural blend of botanical extracts
- Patented
- Promotes water renal elimination
- Increase urination frequency & volume.
- Proven in clinical trial

FR 2 929 120 - B1

INNOV'Réal





# Natural blend of botanical extracts

Separately known in traditional medicine / Few clinically proven

Meadowsweet Flowering Tops Extract  
(*Spirea ulmaria*)



Guarana Seed Extract  
(*Paullinia cupana*)



Caraway Seed Extract  
(*Carum carvi*)



Goldenrod Extract  
(*Solidago virgaurea*)



Dandelion Leaf Extract  
(*Taraxacum officinale*)



ELIM  
REAL®



Sweet Fennel Fruit Extract  
(*Foeniculum vulgare*)

**SYNERGISTIC  
hypothesis!**

ELIM  
REAL®

INNOVÉAL

# Natural blend of botanical extracts

Separately known in traditional medicine / Few clinically proven

Meadowsweet Flowering Tops Extract  
(Antinflammatory : Oedema)



Guarana Seed Extract  
(Boost metabolism)



Caraway Seed Extract  
(Gastro intestinal tract)



Goldenrod Extract  
(Diuretic  
Natriuretic peptide)



Dandelion Leaf Extract  
(Diuretic  
Ca<sup>2+</sup>/Na pump)



Sweet Fennel Fruit Extract  
(Digestive)



**SYNERGISTIC  
hypothesis!**

 **ELIM  
REAL®**

 **ELIM  
REAL®**

**INNOVÉAL**

# Sweet Fennel Fruit Extract (*Foeniculum vulgare*)



EU Medicinal recognition (French & German Escop)  
Management of Digestive disorders, spasms, flatulence



Mechanism of action

Increases Na<sup>+</sup> excretion (El Barbai 2001)



Animals studies

- Increases Diuresis after 5h (Tanira, 1996)
- Decreases Blood pressure
- Enhance Na<sup>+</sup> excretion (El Barbai,2001)



Human studies

Traditional uses in Iranian medicine for Diuresis,  
hypotension & Bladder Kidney diseases (Rahimi, 2013)

# Caraway Seed Extract (Carum carvi)



EU Medicinal recognition (French & German Com.E+Escop)  
Usefull for Gastro-intestinal complaints + Flatulence



Mechanism of action

Increases Ca<sup>++</sup> flux by 26,8% (Rauha, 1999)



Animals studies

Increases Diuresis after 4h & Na<sup>+</sup> excretion  
as Furosemide (Lahlou, 2007 - Dizaye, 2012)



Human studies

- Traditional uses in Moroccan medicine as a Diuretic (Bellakhdar, 1997)
- Reduction of body weight on 70 people (Kazemipour, 2013 + 2106)

# Guarana Seed Extract (Paullinia cupana)



EU Medicinal recognition (French & German Escop + EMA)

Antifatigue



Mechanism of action

Caffeine Antagonize Adenosine A1 receptor  
(Rieg, 2005)



Animals studies

Caffeine increases Diuresis and Na<sup>+</sup> excretion  
(Liu, 2019- Fenton, 2015 - Cho, 2014 - )



Human studies

Caffeine activates the metabolism & increases  
Diuresis (Bergman, 1990)

# Dandelion Leaf Extract (*Taraxacum officinale*)



EU Medicinal recognition (French & German Com E)  
Stimulates biliary function & Increases diuresis



Mechanism of action

Increases intracellular  $\text{Ca}^{++}$  in the kidneys  
(Gerbino, 2018)



Animals studies

Increases water and Sodium ( $\text{Na}^+$ ) excretion vs  
Furosemide (Racz, 1974)



Human studies

Increases diuresis in few hours (Clare, 2009)

# Goldenrod Aerial Parts Extract (Solidago virgaurea)



EU Medicinal recognition (French & German Escop + EMA)

Facilitates Urinary elimination function



Mechanism of action

- Enhances cell membrane permeability & induction of alterations in ionic homeostasis
- Modulates neutral endopeptidase ie blocks hydrolysis of vasoactive peptides, increasing water and sodium excretion (Chodera, 1985)



Animals studies

Increases Diuresis and Na<sup>+</sup> excretion vs Furosemide (Chodera 1985+91, Kaspers, 1998)



Human studies

Traditional uses in German medicine to increase urine volume (EMA, 2008)

# Meadowsweet Flower Extract (Spirea ulmaria)



EU Medicinal recognition (French & German Escop)  
Facilitates the elimination function of the body



Mechanism of action

Salicylic derivatives with Antioxydative flavonoids exert anti-inflammatory (COX1 &2) and analgesic effect (Katanic, 2016)



Animals studies

- Anti inflammatory properties (Katanic, 2016 - Samardzic,2016)
- Protect kidneys from cisplatin toxicity preventing Urea, Uric acid & Creatinine increase (Katanic, 2017)



Human studies

Anti-inflammatory in traditional medicine in all EU countries (Katanic, 2016)





# Natural blend of botanical extracts

Separately known in traditional medicine / Few clinically proven

Meadowsweet Flowering Tops Extract  
(*Spirea ulmaria*)



Caraway Seed Extract  
(*Carum carvi*)



Guarana Seed Extract  
(*Paullinia cupana*)



Goldenrod Extract  
(*Solidago virgaurea*)



Dandelion Leaf Extract  
(*Taraxacum officinale*)



ELIM  
REAL®



Sweet Fennel Fruit Extract  
(*Foeniculum vulgare*)

Let's test it  
**CLINICALLY !**

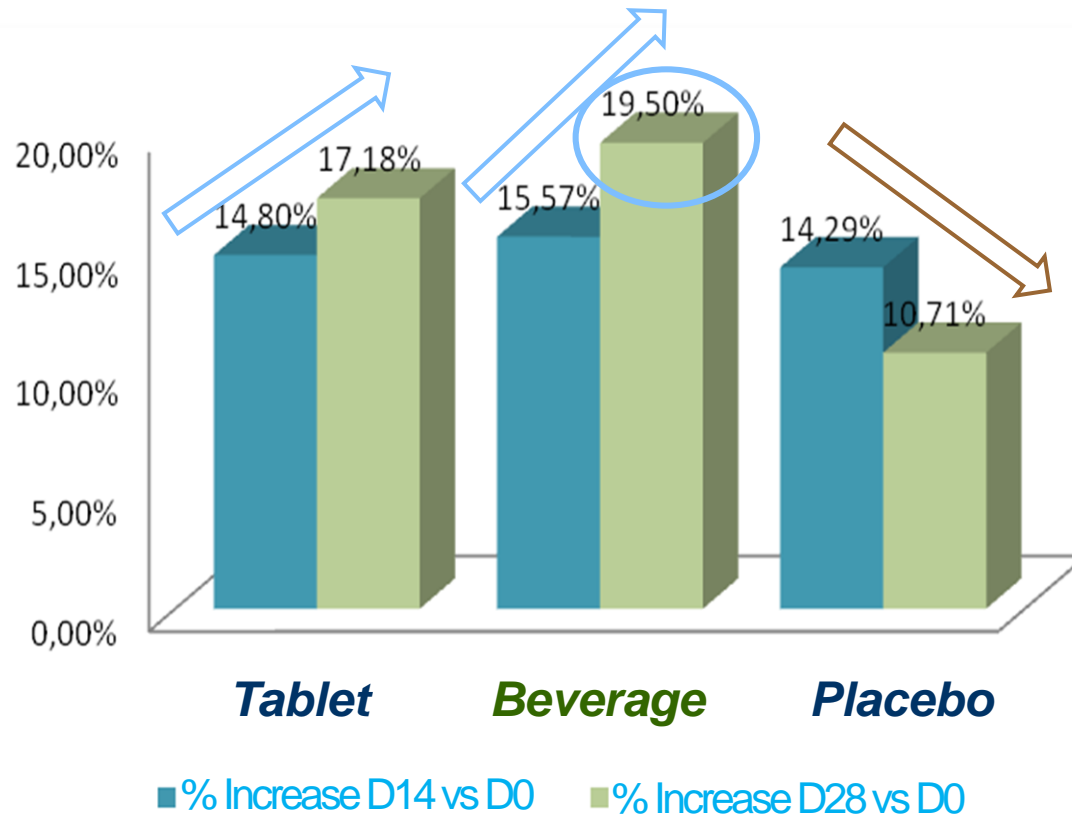
ELIM  
REAL®

INNOVÉAL

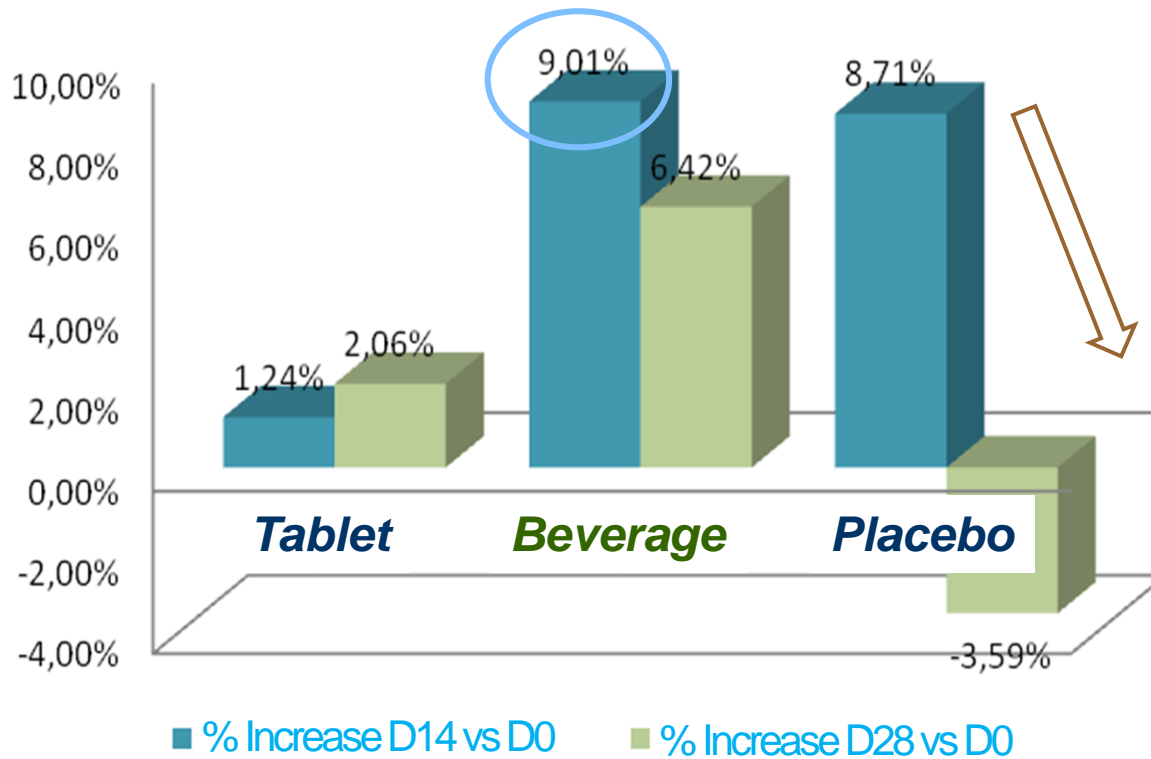
# *Human Clinical trial*

- Methodology: Double blind, randomized, **against placebo**
- Duration: **28** days
- Number of subjects:
  - **95** women aged between 20 and 50 years
  - **Slightly overweight** (BMI 25-28 kg/m<sup>2</sup>)
- Trial methods:
  - Group 1 (N=32): Elim'real<sup>®</sup> **tablet** + placebo beverage
  - Group 2 (N=32): Elim'real<sup>®</sup> **beverage** + placebo tablets
  - Group 3 (N=31): : **Placebo** beverage + tablets

# Frequency Urination/day

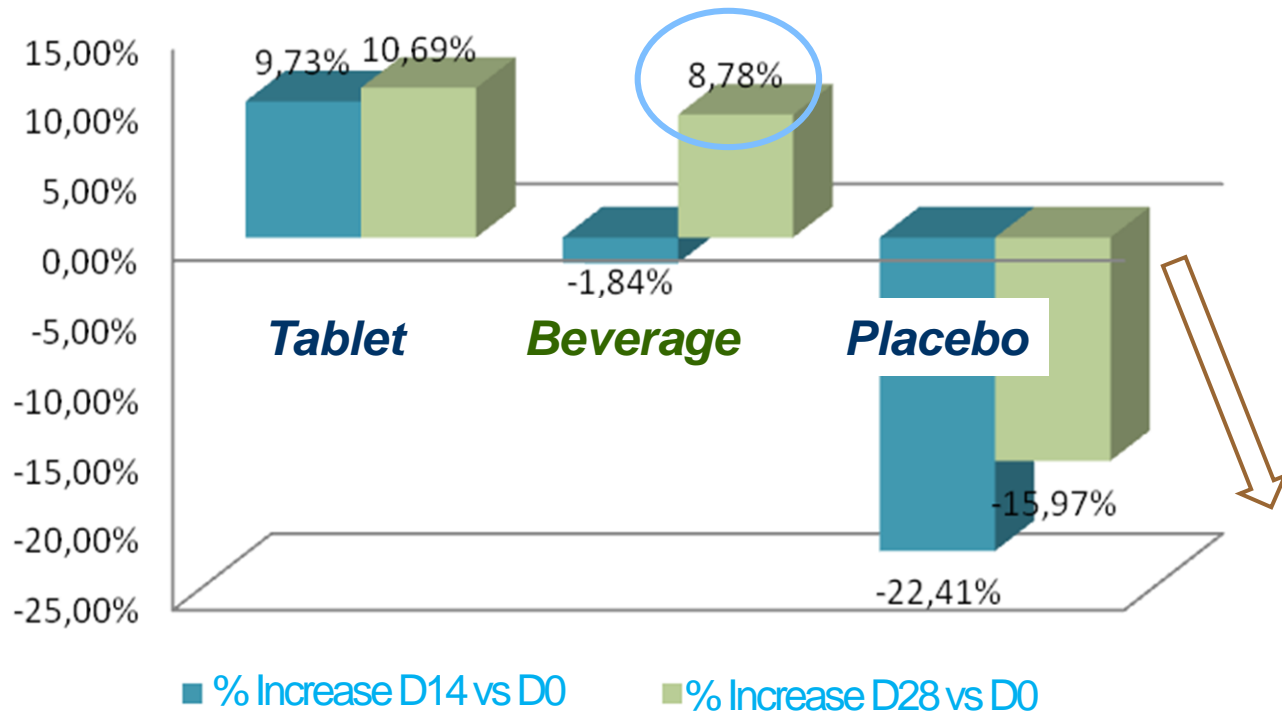


# Volume of Urination/day



# Sodium Elimination/day

(diuretic bio marker)



# Comparing Day28 vs D0

## URINATION FREQUENCY

Increase in urination FREQUENCY  
for **76,92%** of women

up to 5,92 additional urinations /day  
= + **84,62%** of daily urination. (Subject N°26),

## URINATION VOLUME

Increase in urination VOLUME  
for **58,34%** of women

up to 1,02 liter of water loss  
= +**44,35%** of increase. (Subject N°1)

# Questionnaires

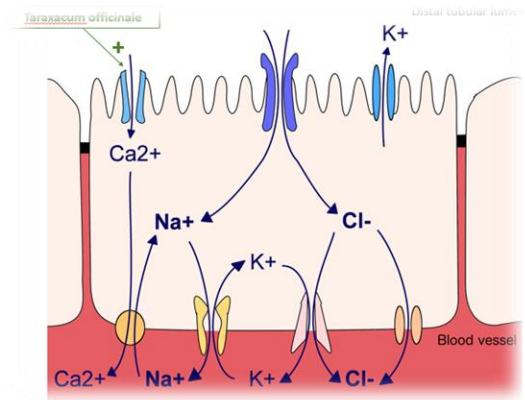
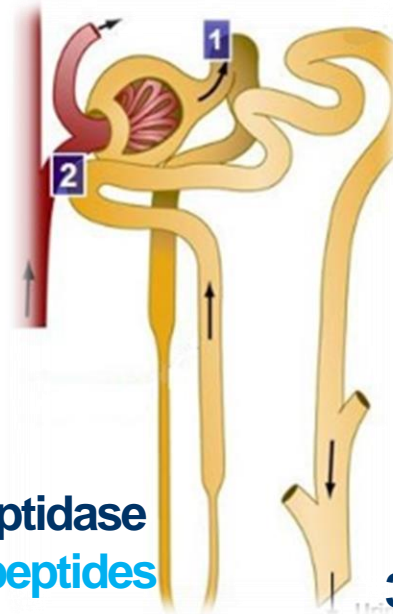
Women felt a superior efficacy  
vs placebo for :

- *Urination* number + volume
- Diuretic sensation
- *Detoxicating* sensation
- Anti-water retention effect
- *Decrease of heavy legs* sensation
- Flat abs sensation

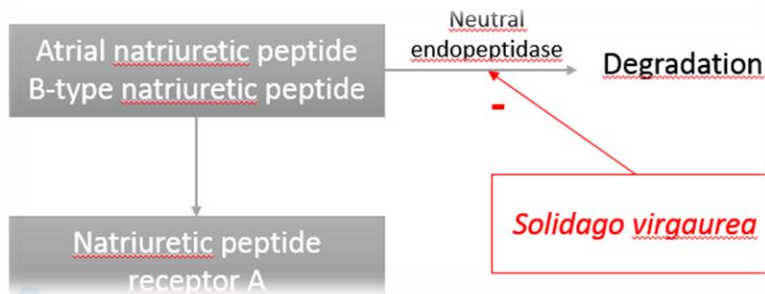
# Mechanisms of action

1) Inhibits Na<sup>+</sup> reabsorption in the proximal tubule leading to DIURESIS enhancement (Caffeine)

2) Blocks adenosine A1 receptor mediated vasoconstriction leading to increase of renal blood flow & enhancing filtration rate (Guarana)



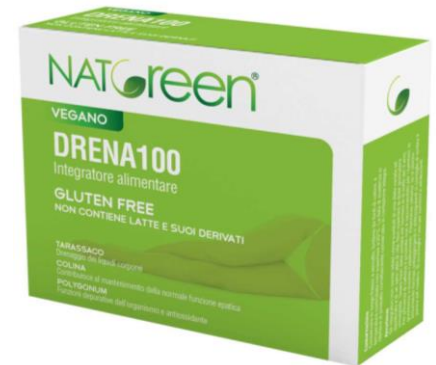
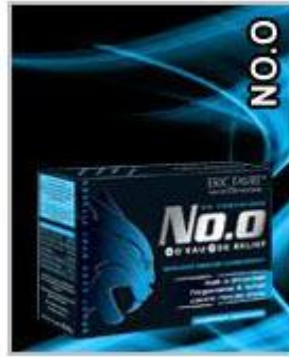
4) Inhibits neutral endopeptidase which increase natriuretic peptides concentrations that enhance natriuresis & diuresis (Goldenrod)



3) Increase Ca<sup>2+</sup> uptake (Dandelion), leading via ATPase Ca<sup>2+</sup>/Na<sup>+</sup> pump to a higher release of Na<sup>+</sup> in Urine enhancing Diuresis



# Products



INNOV'Réal

ELIM  
REAL®

# ***Your Water loss partner !***

- Patented for diuretic application FR0852003
  - Plants and process classified as food
- Drastic quality control (falsification, pesticides,...)
  - Validated safety (LD50, Tolerance, ...)
- A proven diuretic efficacy by an **increase of the urination frequency and volume** in a double blind randomized placebo-controlled clinical trial
  - Water soluble – 805 mg/day





**ELIM  
REAL®**



*Patent FR 0852003*



**Water elimination**

**...by increasing the number  
Of daily urinations**

**INN'Réal**